

Main Activities

Capacity Building Program



Training Activities

Asi@Connect workshops and training programs support capacity building of NREN engineers and administrative staff.

Campus Network Design

Well-developed campus network infrastructure allows universities to connect to their National Research and Education Network (NREN) and to local Internet Exchange Points.

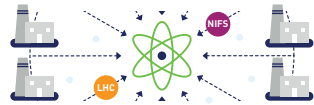
Tele-medicine



Medical doctors and experts share experiences and knowledge for epidemic disease prevention & better public health service.

Asi@Connect provides high-quality network connectivity for supporting live surgery and tele-surgical training.

e-Science



Researchers and institutions collaborate on a range of subjects in natural science: Particle Physics such as Large Hadron Collider (LHC), Nuclear Fusion Science (NIFS), computational lenses, and grid computing.

Earth Observation



Asi@Connect underpins the real-time data exchange through computing systems for climate and weather prediction.

People in remote rural areas benefit from high resolution regional prediction systems which provide faster and more accurate forecasts.

Advanced ICT Technology



Asi@Connect enables researchers and engineers to develop and deliver innovative network technologies such as future internet to make the network environment more reliable, compatible and sustainable.



TEIN*Cooperation Center

Asi@Connect is managed by the regional networking organization TEIN*Cooperation Center (TEIN*CC). TEIN*CC was established in Seoul, Korea, in 2011 as a non-profit Foundation Corporation for the management and operation of TEIN and its successive project phase Asi@Connect.

For more information visit www.tein.asia

Address: A-708, DMC High-Tech Industrial Center,
330 Sungam-ro, Mapo-gu, 03920, Seoul,
S.Korea

TEL: +82-2-3153-7343

Email: teincc@teincc.org



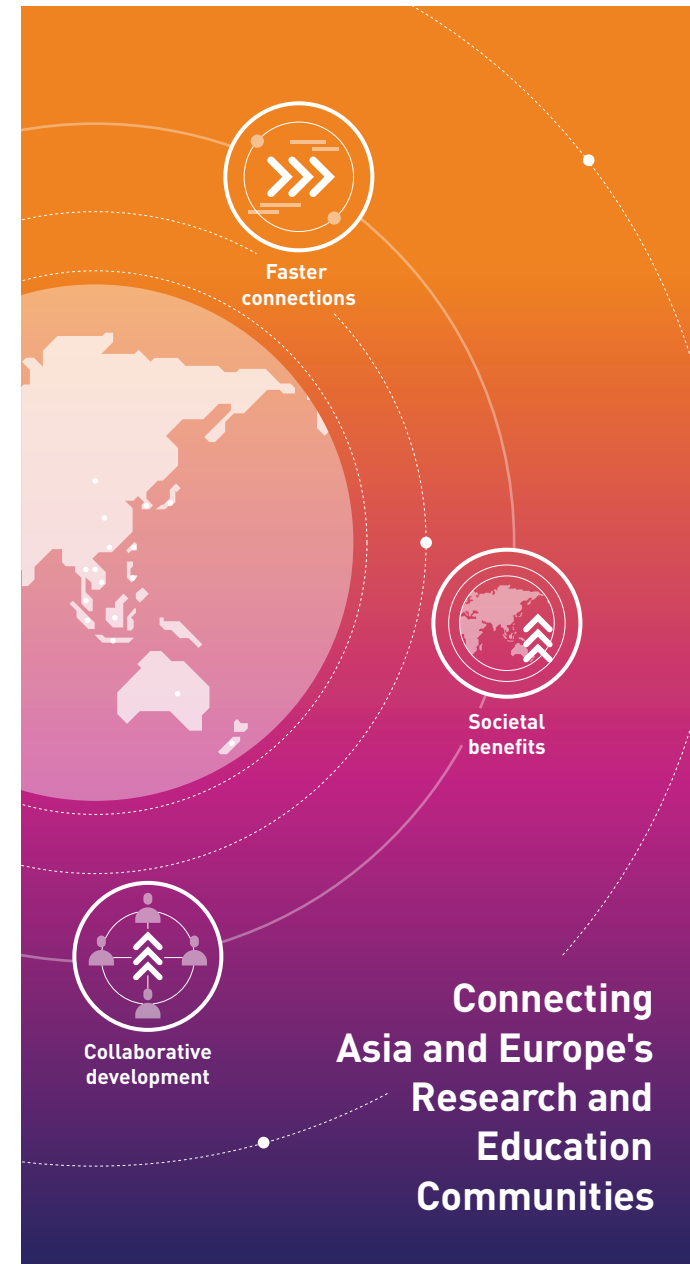
This publication has been produced with co-funding of the European Union for the Asi@Connect project under Grant contract ACA2016-376-562. The contents of this document are the sole responsibility of TEIN*CC and can under no circumstances be regarded as reflecting the position of the European Union.



The Korean Government, the Ministry of Science and ICT (MSIT), supports the operation and management costs of the TEIN*Cooperation center.



Seoul Metropolitan City Government contributes to the TEIN*Cooperation Center office and its facilities.



Connecting
Asia and Europe's
Research and
Education
Communities



What Is Asi@Connect?

The EU co-funded Asi@Connect project provides a dedicated regional high capacity and high quality internet network, Trans Eurasia Information Network (TEIN), for research and education (R&E) communities across Asia-Pacific and Europe, and leverages e-infrastructures developed for public service projects.



Connecting partners faster

One of the most successful ASEM initiatives to support ICT infrastructures and R&E communities through more effective, faster and powerful dedicated internet connections across the Asia-Pacific and with Europe.



Global societal benefits

TEIN supports applications with a high societal impact, such as tele-medicine, earth observation and agricultural research based on global cooperation.

Over the last 5 years, with the development of local network infrastructure and international interconnections, TEIN has more than doubled the traffic and bandwidth.



Collaborative development

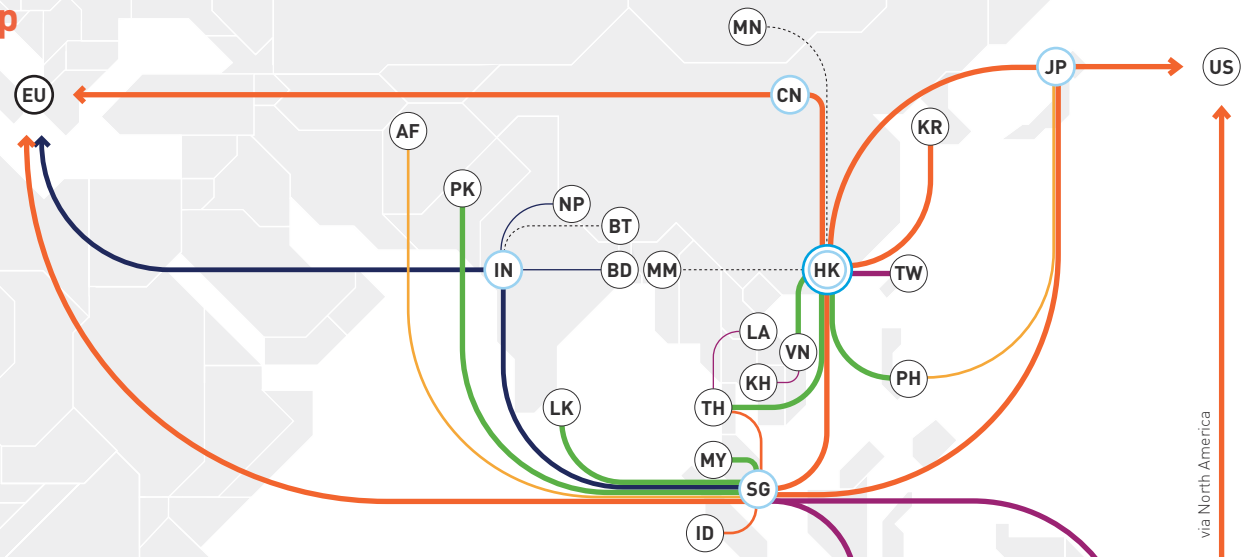
Students, academics and researchers benefit from extensive global collaboration opportunities through Asi@Connect programs, which foster knowledge sharing and capacity development.

Our History

- 2001~06** TEIN Initiative Seoul and Paris
- 2004~08** TEIN2 09 Asian partners and Europe
- 2008~12** TEIN3 18 Asian partners and Europe
- 2012~16** TEIN4 23 Asian partners and Europe
- 2016~** Asi@Connect 24 Asian partners and Europe

TEIN Map

- 10 Gbps
- 2.5 Gbps
- 2 Gbps
- 1 Gbps
- 622 Mbps
- 155 Mbps
- 45 Mbps
- 10 Mbps
- Planned
- TEIN PoPs
- TEIN NOC

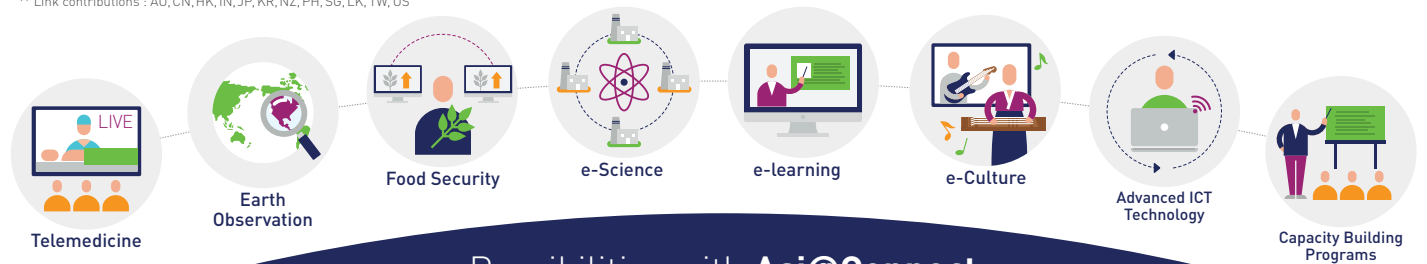


Asi@Connect Project Partners

AF Afghanistan	Afghanistan Research and Education Network (AfgREN)	LA Laos	Laos Education and Research Network (LERNET)
AU Australia	Australia's Academic and Research Network (AARNET)	MY Malaysia	Malaysian Research and Education Network (MYREN)
BD Bangladesh	University Grants Commission (BdREN)	MN Mongolia	Mongolian Research and Education Network (ErdemNet)
BT Bhutan	Department of Information Technology and Telecom (DrukREN)	MM Myanmar	University of Computer Studies Yangon (mmREN)
KH Cambodia	Institute of Technology of Cambodia (CamREN)	NP Nepal	Nepal Research and Education Network (NREN)
CN China	China Education and Research Network (CERNET) China Science and Technology Network (CSTNET)	NZ New Zealand	Research and Education Advanced Network New Zealand (REANNZ)
HK Hong Kong	The Hong Kong Academic and Research Network (HARNET)	PK Pakistan	Pakistan Education and Research Network (PERN)
IN India	National Knowledge Network (NKN)	PH Philippines	Advanced Science and Technology Institute (ASTI)
ID Indonesia	Institut Teknologi Bandung (ITB)	SG Singapore	Singapore Advanced Research & Education Network (SingAREN)
JP Japan	Ministry of Agriculture, Forestry and Fisheries Research Network (MAFFIN) National Institute of Information and Communications (NICT) National Institute of Informatics (NII)	LK Sri Lanka	Lanka Education and Research Network (LEARN)
KR Korea	National Information Society Agency (NIA)	TW Taiwan	Academia Sinica Grid Computing (ASGC)
		TH Thailand	Thailand Research Education Network Association (ThaiREN)
		VN Vietnam	National Agency for Science and Technology Information (NASATI)

* As of August 2017, Ongoing updates

** Link contributions : AU, CN, HK, IN, JP, KR, NZ, PH, SG, LK, TW, US



Possibilities with **Asi@Connect**